



# Equipment Repair Services

Repair Centers  
Field Services  
Fabrication



**67+** Years of  
Service and  
Dedication

[www.fischerprocess.com](http://www.fischerprocess.com)



"Your Liquid Handling Experts"

**24/7/365**

**EMERGENCY NUMBER**

**(800) 543-7000**





# Customer Equipment Form\*\*

**SAFETY FIRST**



## CUSTOMER EQUIPMENT FORM

For everyone's safety, please send this completed form to enable work to begin.

Equipment has been drained and is ready for safe disassembly: Yes No

*Any equipment received not properly cleaned and drained will be subject to environmental fees.*

Name & signature \_\_\_\_\_

List product being pumped / mixed by equipment \_\_\_\_\_

Operating Temp \_\_\_\_\_ and Equipment Speed \_\_\_\_\_ (RPM)

Gearbox: oil type, specification \_\_\_\_\_

Please send Safety Data Sheet (SDS) with the equipment. Applicable: Yes No

If Not applicable, provide explanation: \_\_\_\_\_  
\_\_\_\_\_

Your Company & Address: \_\_\_\_\_

Contact name: \_\_\_\_\_ Date: \_\_\_\_\_

Phone: \_\_\_\_\_ E-mail: \_\_\_\_\_

Equipment Manufacturer / Model / Size / Serial Number / Other:

\_\_\_\_\_

Reason needing repair: \_\_\_\_\_

Please ship equipment to our shop location:

\_\_\_\_\_  
\_\_\_\_\_  
\_\_\_\_\_

(Internal Use below)

Standard Quote

Visual Only Inspection & Quote

Upgrade Quote

Notes & instructions:

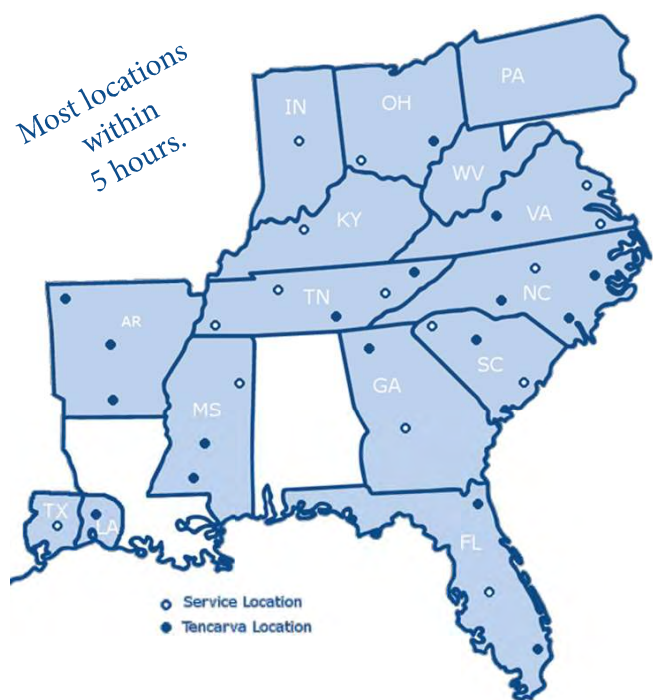
**\*\*To download this form in fillable pdf visit:**

<https://tencarva.com/repairs/service-forms-documents/>

# Repair Shop Network

## FIELD SERVICE AND SHOP REPAIR

- ✓ Root Cause Failure Analysis
- ✓ Pick up and Delivery
- ✓ Cutting and Machining
- ✓ Balancing Services
- ✓ Boring and Milling Service
- ✓ Blasting and Resurfacing
- ✓ Video Scoping
- ✓ Laser Alignment
- ✓ Welding & Fabrication
- ✓ Engineered Upgrades\*
- ✓ Equipment Re-rates\*



### Quick Response & Local Sites

Our 17 repair service centers share expertise and technologies to keep your equipment in top working order.

*\*Repair performed in conjunction with repair partner.*

## Repair Service Centers

### Equipment Repair Shops (17)

Lakeland	FL	Greenville	SC
Macon	GA	Charleston	SC
Indianapolis	IN	Knoxville	TN
Owensboro	KY	Nashville	TN
Brookhaven	MS	Memphis	TN
Columbus	MS	Beaumont	TX
Greensboro	NC	Chesapeake	VA
Loveland	OH	Richmond	VA
Marietta	OH		

### Submersible Pump Repair: (2 Locations)

Richmond, VA  
Nashville, TN

### High Energy Equipment Repair:

ITT ProService\*





# Pumps and Equipment



## Tencarva Repairs Pumps and More...

- Air operated double diaphragm pumps
- Centrifugal pumps
- Vertical turbine pumps
- Split case | double suction pumps
- Mag drive pumps
- Metering pumps
- Vacuum pumps
- Boiler feed pumps\*
- API Pumps

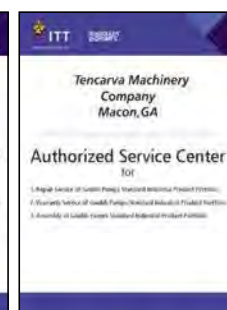
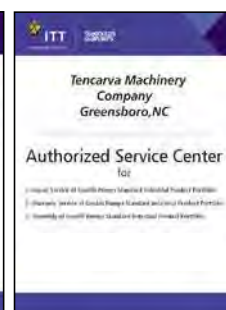
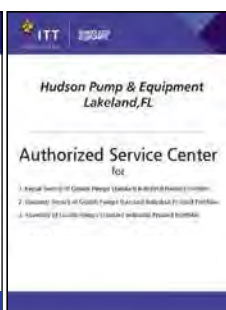
- Liquid ring vacuum pumps
- Mixers
- Rotary vane pumps
- Submersible pumps
- Gearboxes\*
- Multistage pumps
- Condensate pumps
- Most rotating equipment



# Quality Repair

## Quality Repair

- Certifications
- Quality Manual
- Safety Standards and Compliance
- Engineered Reports
- Journaled Regular Calibrations





## Field Service



### Field Service Technicians

We have a dedicated team of field service technicians experienced in a variety of pumps and equipment.

Your critical equipment will be back online in a safe and efficient manner. We can provide equipment repair at your facility, including removal, installations, start up, troubleshooting, and laser alignment.



## Laser Alignment



### Laser Alignment Services

When shafts or sheaves are misaligned, seals, couplings and belts can become damaged. Replacing the damaged parts solves the symptoms; however the root cause is often misalignment. Laser alignment is the best solution for correcting these issues.



## Vertical Turbine Repair



### Vertical Turbine Repair

Tencarva can easily restore your vertical turbine pump's original performance (and in many instances, improve it) by re-bowling.

Complete new liquid ends match all makes of vertical turbine pumps from 6" to 120" ... regardless of manufacturer.

## Lifting Capabilities



### Crane Services

Our cranes are capable of moving up to 15 tons allowing us to safely move the heaviest of equipment between our specialized workstations.



## Submersible Pump Repair



### **Submersible Pump Repair**

Our submersible repair capabilities include motor core testing, electrical diagnostics, up to 400HP VFD testing, lathes, presses, and a painting booth area.

## Machining Capabilities



### **Machining Services**

Our specialists can provide you custom machining with exacting accuracy and precision. We machine carbon steel, stainless steel, and tool steel. No job is too big or small for us!



## Impeller Balancing

### Proper Balancing...

Substantially reduces repairs and increases the useful life of your equipment.



Every impeller balanced by a Tencarva repair center, at a minimum conforms to a ISO G 1.0 specification and upon request comes with a balance report certificate ensuring that the impeller is within the exact specifications. If even higher calibration balancing is required, our equipment is capable of balance as close as 4W/N. (4 times weight over specific speed)



The Tencarva repair network is capable of balancing elements to 5000 lbs, 72" in diameter and 12 feet in length. All our balancers are calibrated and certified.

## Mechanical Seal Repair

# EagleBurgmann

a member of **EKK** and **FREUDENBERG**



### Mechanical Seal Repair

Mechanical seals play a critical role in the operation of many pumps and other rotating equipment. When they fail it can become a hazardous, and costly ordeal.

Through our partnership with **Eagle Burgmann**, we have the resources to rebuild mechanical seals and have your equipment operational for less cost than a new replacement seal.





## Clean Room Repair\*

We offer SKF certified expertise in clean room assembly of gearboxes and bearing installations.



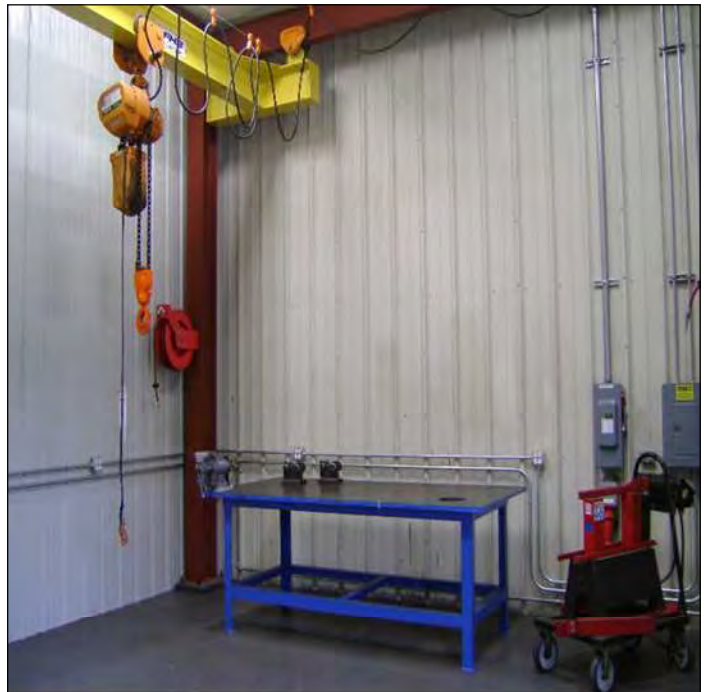
*\* Clean room repairs are available at Lakeland, Fla. and Macon, Ga.*

### Clean Room Services Include:

- Bearing Installations
- Gearbox Assembly
- Controlled Environment
- Positive Pressure Air
- 700 ft<sup>2</sup> Climate Controlled
- Metering Pump Testing



Our metering pump testing station has multiple calibration columns to insure that your metering pump is fully tested for performance and accuracy.



Our clean room is equipped with overhead crane hoist for lifting and lowering and moving all heavy equipment safely and properly.



# Pump Performance Testing Lab

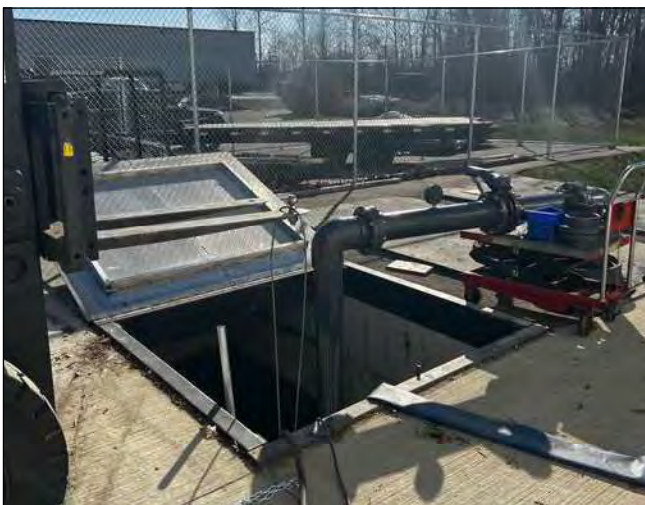
We provide pump performance and mechanical testing at our facility in Loveland, Ohio. We utilize state-of-the-art monitoring and data collection software to test across the pump's operating region.

We utilize custom designed PLC based logic that allows all system parameters to be monitored and controlled from a central control station, thus achieving and maintaining specific operating conditions. This enables data from calibrated precision electronic sensors to be collected and recorded for use in determining pump performance.



## Pump Testing Equipment and Facility Capabilities:

- 10,000 gallon testing sump with 3 separate but connected chambers
- The testing sump is 12' deep x 9' x 16'
- Max Flow capacity ranges from 2000-4000 GPM
- Upright vertical tank is 4550 gal and can performance test up to 1000 GPM
- Tests available: calibrated flow, pressure, vibration, torque, temperature and speed
- Magnetic flow meter and various pressure transmitters for suction and discharge pressure
- We can test 3 Phase motors from 1 HP to 100 HP.
- Voltage ranges are from 208-460 Volt 3 phase
- Testing available for single phase powered pumps up to 20 amps
- Can test submersible pumps and dry lift test for self-priming pumps and positive displacement pumps
- Standards can be modified to meet specific customer requirements





## Tencarva Gearbox Repair



Spin Test Table



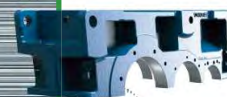
### Tencarva Gearbox Repair...

Our sales engineers understand gearbox application, life-cycle history, maintenance procedures and the problems you often experience.

Whether you need a solution to an existing problem, technical expertise, new gearbox or on-site services you can count on us to be your gearbox engineered solutions provider.

When you need more performance from your gearbox we offer upgrades, retrofits and replacements.

## Sumitomo Gearbox Repair



### Sumitomo Gearbox Repair...

- ⚙ Large gearbox offerings (Paramax/Hansen)
- ⚙ Drop-In/Retrofits of competitors units (both current and obsolete)
- ⚙ On-Site gearbox inspections/inspection reports/repairs
- ⚙ Duplicate replacements of Sumitomo family (Paramax/Hansen/Cydo)
- ⚙ Design and manufacture a complete line of open gearing for a variety of applications
- ⚙ Repair capabilities for any manufacturer
- ⚙ Customized units



### Sumitomo Drive Technologies





## Specialized Coatings

Specialized coatings such as Belzona, Enecon and HVOF Coating will extend the life of your rotating equipment.



### Specialized Coatings

Provides protection in the following cases:

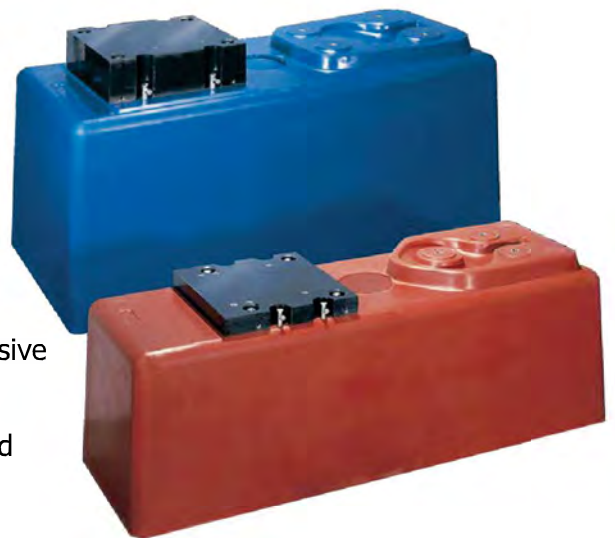
- Abrasive services
- Corrosive chemicals
- De-ionized water
- Excessive wear
- Cavitation
- Erosion
- Leak repair
- Resurfacing
- Galvanic corrosion

## Baseplate/Foundation Replacement



### Baseplate / Foundation Replacement

Repairs to conventional concrete foundations are costly, labor intensive and time consuming. Moreover, acid-proofing foundations for corrosive use pumps is difficult and prone to repeat failure.



### Why we should be replacing your damaged baseplates...

Polymer concrete bases are the preferred pump foundation solution.

This chemical-resistant foundation system can be set in place, filled with concrete and ready to operate in less than two days.



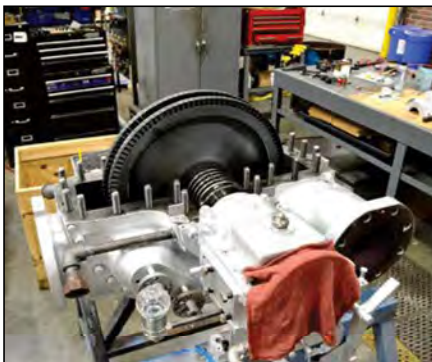
## Uniguard Guarding Upgrades



### Uniguard Guarding Upgrades

Uniguard Machine Guards manufactures vertical belt machine guards, horizontal belt machine guards, machine guards with a clear polycarbonate inspection window, OSHA-compliant, MSHA-compliant polyethylene guards, nonmetallic adjustable-width machine guards, and ANSI/OSHA-compliant nonmetallic pump guards.

## Tier III Service Capabilities



### ProServices - ITT Tier III - High Energy Pump Repair

Capabilities include Tier III repair for high energy pumps such as replacement parts, repair, engineering upgrades, predictive maintenance, reliability improvement and maintenance contracts. ProServices offers installation and commissioning, root cause failure analysis, condition monitoring, and engineering services.



# Procast Replacement Parts

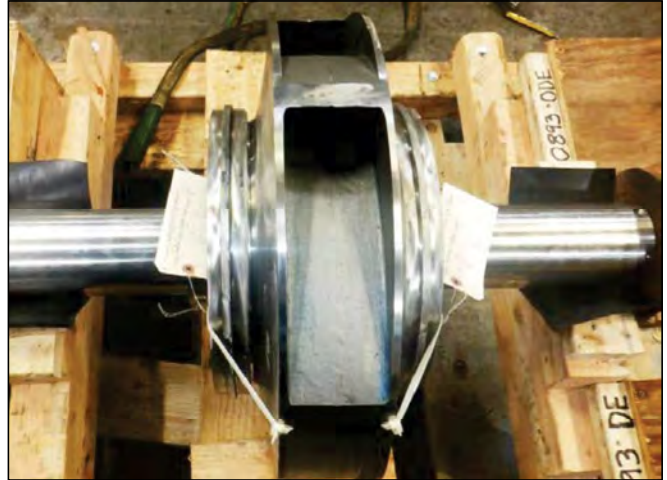


*Obsolete doesn't have to mean impossible*

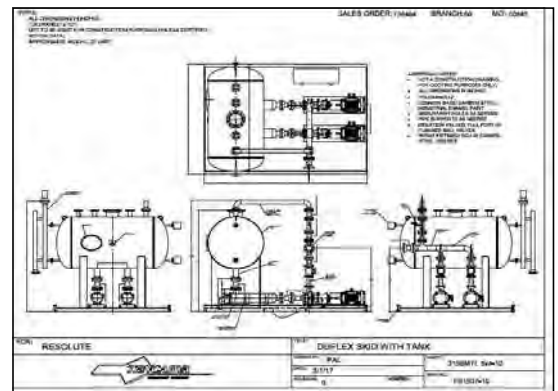
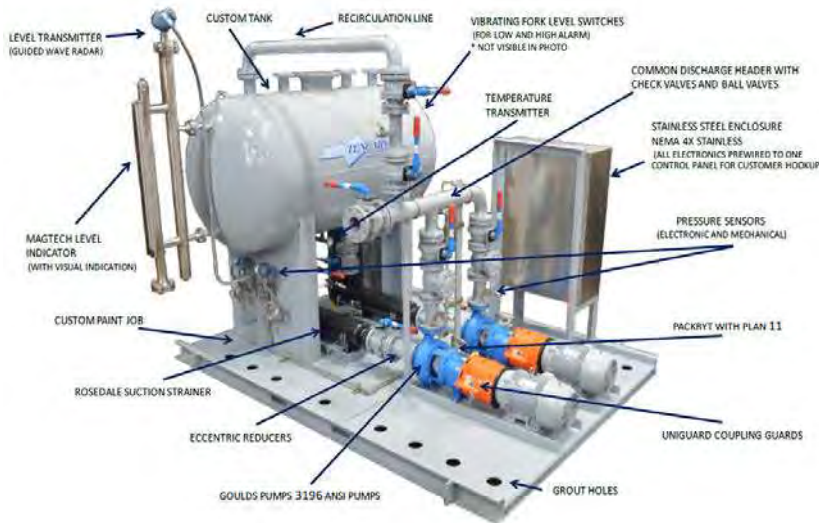
## Procast Replacement Parts

ITT PRO Services offers ProCast® engineered replacement parts for all brands of industrial pumps and rotating equipment. ProCast parts meet or exceed OEM specifications at very competitive pricing and often with faster lead times.

ProCast parts deliver the advantages of ITT's advanced modeling capabilities, in-house foundry and integrated pattern shop, and more than a century of pump design and manufacturing experience for a variety of applications worldwide.



# Fabrication Services



Design Documentation is available upon request for fabricated packages



## Fabrication Services

Tencarva's team of experienced designers can work with you to model a packaged system solution to meet your specific needs and specifications. To ensure a seamless installation, we can provide drawings to include general arrangement, piping configuration, and electrical distribution/wiring.



# Fabrication Photo Gallery



Custom 3996 Hanging Bases



Apex Duplex x/Controls



Tandem Package Skids



AODD Multi Pump Package



AOD Filter Tank System



Self-Priming Fire Pump w/Bases



Metering Pump Skid



High-Pressure Multi Stage Control Package



SS TriPlex Booster System



Custom Axial Flow Bases w/  
Motor Adjusters



Duplex Booster Package  
w/Controls



TriPlex Filtration Skid



Self Regulating In-Line Heat  
Exchanger



Controlled Progressive Cavity  
Pumping System



Custom Designed Water-Weigh  
Dosing Platform



Vacuum Frame w/Motor  
Adjustments



Sherwin Williams Yamada  
Skids



Waukesha 520 Assys  
Systems



Waukesha 5000 Assys  
Systems



3410 Bank of Pumps





## Contact Your Local Tencarva Location Today

### Arkansas

#### Little Rock

9720A Interstate 30  
@ Warehouse Road  
Little Rock, AR 72209  
Phone: (501) 565-0105

#### Springdale

1104 Shaver Street  
Springdale, AR 72762  
Phone: (479) 872-8642

#### El Dorado

1070 Hinson Road  
El Dorado, AR 71730  
Phone: (870) 677-6270

### Mississippi

#### Madison

464 Church Road  
Suite 800  
Madison, MS 39110  
Phone: (601) 502-2400

#### Brookhaven

984 Hwy 84 East  
Brookhaven, MS 39601  
Phone: (601) 823-0510

#### Columbus

2611 Cleda Drive  
Columbus, MS 39705  
Phone: (662) 570-6290

### Georgia

#### Cumming

5320 Lake Pointe Center Drive  
Suite D  
Cumming, GA 30041  
Phone: (770) 888-0202

#### Macon

110 Gateway Drive  
Macon, GA 31210  
Phone: (478) 471-7867

### Kentucky

#### Owensboro

**Fischer-Process & Equipment**  
2615 Warehouse Road  
Owensboro, KY 42301  
Phone: (800) 543-7000

### Tennessee

#### Nashville

2937 Kraft Drive  
Nashville, TN 37204  
Phone: (615) 742-3101

#### Chattanooga

4071 S. Access Road  
Suite 105  
Chattanooga, TN 37406  
Phone: (423) 892-8928

#### Johnson City

5 Worth Circle  
Johnson City, TN 37601  
Phone: (423) 282-5455

#### Alcoa

3057 Regal Drive  
Alcoa, TN 37701  
Phone: (865) 588-7674

#### Memphis

4465 Getwell Road  
Memphis, TN 38118  
Phone: (901) 794-7570

### North Carolina

#### Greensboro

1115 Pleasant Ridge Road  
Greensboro, NC 27409  
Phone: (336) 665-0250

#### Charlotte

417-B Minuet Lane  
Charlotte, NC 28217  
Phone: (704) 521-9400

#### Greenville

100B Staton Court  
Greenville, NC 27834  
Phone: (252) 695-0400

#### Wilmington

1200 North 23rd Street  
Suite 111  
Wilmington, NC 28405  
Phone: (910) 799-8800

### Indiana

#### Indianapolis

**Fischer-Process & Equipment**  
7710 Moller Road  
Indianapolis, IN 46268  
Phone: (800) 543-7000

### Virginia

#### Richmond

12200 Wilfong Court  
Midlothian, VA 23112  
Phone: (804) 639-4646

#### Chesapeake

933 Corporate Lane  
Chesapeake, VA 23320  
Phone: (757) 548-0400

#### Salem

1410 Mill Race Drive  
Salem, VA 24153  
Phone: (540) 375-7240

### Ohio

#### Loveland

**Fischer-Process & Equipment**  
155 Commerce Drive  
Loveland, OH 45141  
Phone: (513) 583-4800

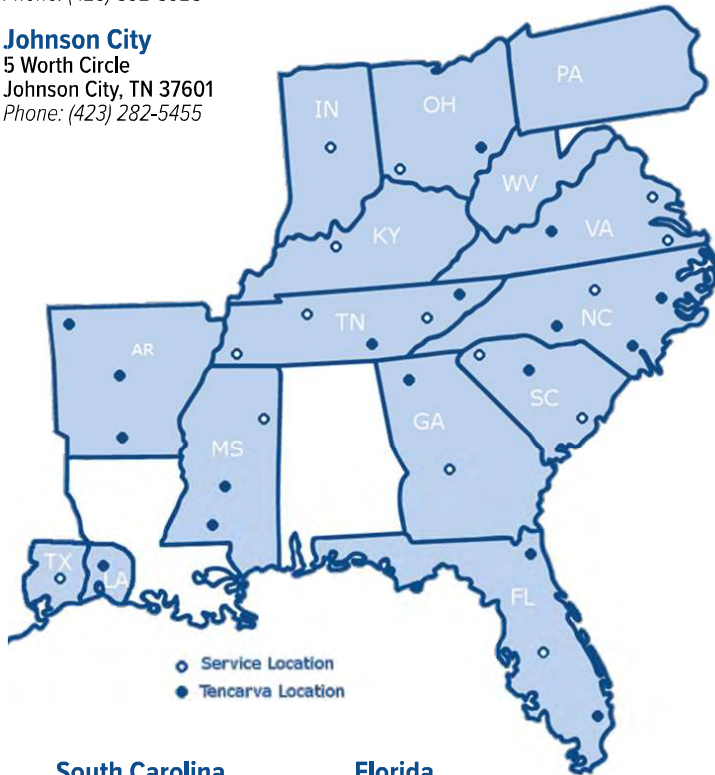
#### Marietta

**Fischer-Process & Equipment**  
State Route 821  
2343 Building 10  
Marietta, OH 46720  
Phone: (513) 583-4800

### Texas

#### Beaumont

**Saladin Pump & Equipment**  
4510 West Cardinal Drive  
Beaumont, TX 77705  
Phone: (409) 860-3442



### South Carolina

#### Columbia

1405 Old Dairy Drive  
Columbia, SC 29201  
Phone: (803) 256-8100

#### Greenville

14 Park Place Court  
Greenville, SC 29607  
Phone: (864) 277-6860

#### North Charleston

2460 Remount Road  
Suite 101  
North Charleston, SC 29406  
Phone: (843) 747-1173

### Florida

#### Jacksonville

**Hudson Pump & Equipment**  
10475 Fortune Parkway  
Bldg. 200/Suite 220  
Jacksonville, FL 32256  
Phone: (904) 733-7828

#### Lakeland

**Hudson Pump & Equipment**  
3524 Craftsman Boulevard  
Lakeland, FL 33803  
Phone: (863) 665-7867

#### West Palm Beach

**Hudson Pump & Equipment**  
480 Tall Pines Road  
West Palm Beach, FL 33413  
Phone: (561) 834-7620

**24/7/365**  
EMERGENCY NUMBER  
(800) 543-7000

www.fischerprocess.com

