



**1, 2 & 3 PIECE BALL VALVES**  
**TRUNNION VALVES**  
**FLANGED VALVES & TOP ENTRY VALVES**  
**3 WAY / 4 WAY / 5 WAY BALL VALVES**  
**METAL SEATED BALL VALVES**  
**SPECIALTY VALVES**  
**PRODUCT OVERVIEW**

QUALITY | EXPERTISE | PRODUCT RANGE

# ONE & TWO PIECE BALL VALVES

## FSLD1100 SERIES

2000 psi One Piece Ball Valve

Fire safe to API 607, 4th Edition

Adjustable stem packing, no leakage paths through body, blow-out proof stem, 150 psi saturated steam

MTRs available, NACE MR0175

Size	1/4" - 2"
Body Material	316, WCB
Trim Material	316, WCB
Packing Material	PTFE or Graphoil
Port	Reduced port
End Connections	NPT
Temperature	-20°F to +375°F
Seat Materials	RPTFE



## FSLD3900F SERIES

3000 psi Two Piece Ball Valve

Fire safe to API 607, 4th Edition

Adjustable packing, seal-welded body, silicone-free, blow-out proof stem

MTRs available, NACE MR0175

Size	1/4" - 2"
Body Material	WCB, 316, Alloys
Trim Material	316, 17-4 stem, Alloys
Packing Material	PTFE or Graphoil
Port	Full port
End Connections	NPT, metric
Temperature	-50°F to +600°F
Seat Materials	Delrin, PEEK

## 3700 SERIES

1000 psi Two Piece Full Port Ball Valve

Adjustable packing, silicone-free

Blow-out proof stem

Anti-static stem

Pressure 1,000 psi

Size	1/4" - 3"
Body Material	316
Trim Material	316
Packing Material	PTFE or Graphoil
Port	Full port
End Connections	NPT, metric
Temperature	-29°F to + 300°F
Seat Materials	PTFE
Options	Locking handle, Stem extension, Oval handle



# FSLD3500 SERIES

2000 psi Two Piece Ball Valve  
 Fire safe to API 607, 4th Edition  
 Adjustable packing, seal-welded body, silicone-free, blow-out proof stem  
 ISO 5211 mounting pad, MTRs available, NACE MR0175

Size	1/4" - 3"
Body Material	WCB, 316
Trim Material	316, 17-4 stem
Packing Material	PTFE or Graphoil
Port	Full port
End Connections	NPT, metric
Temperature	-29°F to +600°F
Seat Materials	TFM, TFM 4215
Options	Locking handle, Stem extension, Limit switch, Spring handle



# DM3800F SERIES

1000 psi Two Piece Ball Valve  
 ISO 5211 direct mounting pad  
 Live loaded packing, silicone-free, blow-out proof stem  
 MTRs available



Size	1/4" - 3"
Body Material	304, 316, 316L
Trim Material	304, 316
Packing Material	PTFE
Port	Full port
End Connections	NPT, metric
Temperature	-29°F to + 300°F
Seat Materials	Teflon
Options	Locking handle, Stem extension, Limit switch, Spring handle

# THREE PIECE BALL VALVES

## DM4800 SERIES

3600 psi, Three Piece Ball Valve

ISO direct mounting pad, Fire safe to API 607, 7th Edition

Live-loaded packing, encapsulated seat with locking handle, B16.34

MTRs available

CRN Registration Number available, LDAR Compliant ISO-15848,

TA Luft certification

Size	1/4" - 3"
Body Material	WCB, 316, Alloys
Trim Material	316, Alloys; Stellite ball
Packing Material	PTFE, Graphoil, TFM
Port	Full port
End Connections	Threaded, SW, BW, ESW, Flanged ANSI 150 - 1500
Temperature	-20°F to +1000°F
Seat Materials	PEEK, Delrin, Metal, TFM 4215, Carbon PEEK
Options	Chainwheel, Fusible link, Extended bonnet, Spring handle



## DMCF7300 SERIES

1000 psi, Tri-Clamp Valve with 10Ra Interior Finish

ISO 5211 direct mounting pad

Blow-out proof stem, cavity-filled, sanitary three piece ball valve

Live-loaded packing, 3A certified

MTRs available



Size	1/4" - 4"
Body Material	316, Alloy 20, Duplex, Monel
Trim Material	316, Alloy 20, Duplex, Monel
Packing Material	PTFE, Graphoil, TFM
Port	Full port
End Connections	Tri-clamp, BW, Tube
Temperature	-20°F to +600°F
Seat Materials	Teflon, TFM, TFM 4215
Options	CIP/SIP self-flushing, non-cavity filled, Spring handle

## DM4600 SERIES

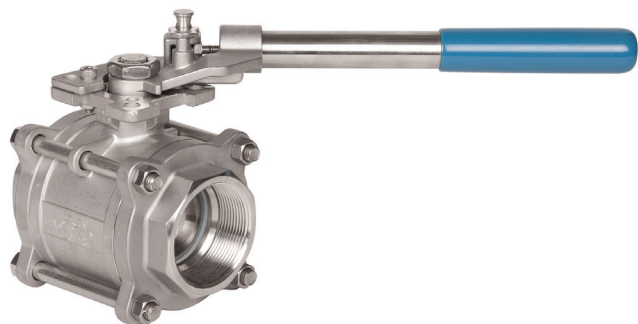
2000 psi, Three Piece, High Performance Valve, B16.34, Fire safe to API 607, 7th Edition, ISO 5211 direct mounting pad, live-loaded packing, blow-out proof stem, anti-static, silicone-free  
MTRs available, LDAR Compliant ISO-15848, TA-LUFT Emissions certification, CRN, UL certified

Size	1/4" - 3"
Body Material	WCB, 316, Alloy 20, Duplex, Alloys
Trim Material	316, Alloy 20, Duplex, Hastelloy C
Packing Material	PTFE, Graphoil, TFM
Port	Full port
End Connections	NPT, SW, BW, Flanged 150 - 600, metric threads
Temperature	-50°F to +650°F
Seat Materials	TFM 1600, TFM 4215, UHMPWE, Vespel, Metal Seated
Options	Cryogenic and fugitive emission bonnets
Certifications	UL certified for fluid types, certified to NSF/ANSI 372 and NSF/ANSI 61 Section 8-2017 by Truesdal Laboratory for drinking water



## DM4500FTMTMS SERIES

ISO 5211 Direct Mounting Pad, Three Piece Ball Valve  
1000 psi, live-loaded packing, blow-out proof stem, silicone free  
MTRs available



Size	1/4" - 4"
Body Material	WCB, 316, Alloy 20, Duplex, Alloys
Trim Material	316, Alloy 20, Duplex, Alloy
Packing Material	PTFE, Graphoil, TFM
Port	Full port
End Connections	ANSI 150 - 300, NPT, SW, BW, metric threads
Temperature	-50°F to +450°F
Seat Materials	TFM 1600
Options	Oval handle, SR handle, Limit switch, Automation, Spring handle



## 9500F SERIES

Double Block & Bleed, Seal Welded Ball Valve  
API 6D, blow-out proof stem, NACE-certified  
Fire safe to API 607, 4th Edition  
B16.34, B16-10, ISO 5211 direct mounting pad  
MTRs available

Size	2" - 60"
Body Material	304, WCB, 316, LCB, LF2, F316, A105
Trim Material	316, 17-4 stem, Chrome, SS410
Packing Material	PTFE, Graphoil, TFM
Port	Full port and reduced port
End Connections	NPT, SW, ANSI 150 - 2500
Temperature	-50°F to +1000°F
Seat Materials	Nylon, RPTFE, TFM, Metal Seated, PEEK, Carbon PEEK, Tungsten Carbide, Stellite, Devlon
Options	Locking handle, Gear operator, Stem extension for buried service



## 9700F SERIES

Double Block & Bleed Ball Valve  
API 6D, blow-out proof stem  
Fire-safe to API 607, 4th Edition  
NACE certified, B16.34, ISO 5211 direct mounting pad  
MTRs available, CRN available

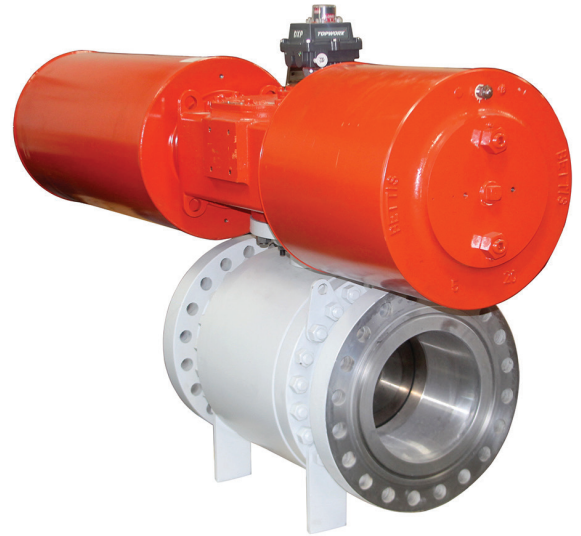
Size	2" - 60"
Body Material	WCB, 316, LCB, LF2, F316, A105
Trim Material	316, 17-4 stem, Chrome
Packing Material	PTFE, Graphoil, TFM
Port	Full port and Reduced port
End Connections	NPT, SW, ANSI 150 - 2500
Temperature	-50°F to +1000°F
Seat Materials	Nylon, RPTFE, TFM, PEEK, Carbon PEEK, Carbon TFM 4215
Options	Locking handle, Gear operator



# 9800 SERIES

Metal Seated Ball Valve  
API 6D, blow-out proof stem  
Fire-safe to API 607, 4th Edition  
NACE-certified, B16.34, B16.10, ISO 5211 direct mounting pad  
MTRs available

Size	2" - 60"
Body Material	WCB, 316, LCB, LF2, F316, A105
Trim Material	316, 17-4 stem, Chrome, SS410
Packing Material	PTFE, Graphoil, TFM
Port	Full port and Reduced port
End Connections	NPT, SW, ANSI 150 - 2500
Temperature	-50°F to +1000°F
Seat Materials	Metal Seated, Stellite, Tungsten Carbide, Inconel
Options	Locking handle, Gear operator



# TOP ENTRY VALVES

## DM2700 SERIES

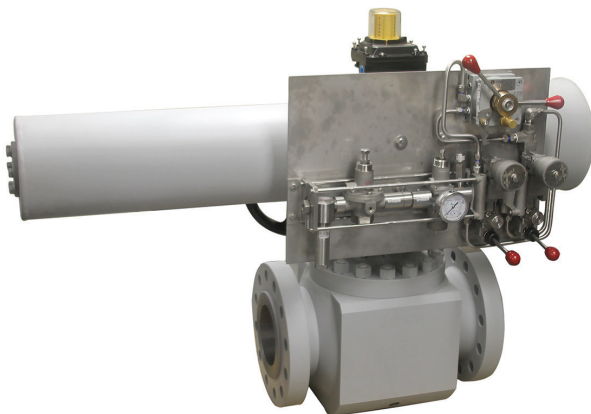
One Piece, Top Entry, ISO 5211 Direct Mounting Pad, Fire Safe design, ANSI 600, Convenient in-line repairable, one piece ball valve  
Live-loaded packing, silicone-free, anti-static  
LDAR Compliant ISO-15848, TA-LUFT Emission certification  
MTRs available

Size	1/2" - 4"
Body Material	WCB, 316, Alloys
Trim Material	WCB, 316, Alloys
Packing Material	PTFE, Graphoil, TFM
Port	Reduced port
End Connections	SW, BW, NPT, Metric
Temperature	-50°F to +600°F
Seat Materials	TFM1600, TFM4215



## 9400 SERIES

Top Entry Ball Valve, Fire Safe to API 607, 4th Edition  
Meets ASME B16.34, B16.5 & B16.10, ISO 5211 direct mounting pad  
Seats compensate for wear, fluctuations of pressure/temperature  
MTRs available



Size	Full: 1/2" - 10" Reduced: 1/2" - 12"
Body Material	A105, WCB, 316, F316, LF2, LCB, Alloys
Trim Material	316, Chrome, Alloys
Packing Material	PTFE, Graphoil, TFM
Port	Full port, Reduced port
End Connections	NPT, metric, BW, SW, ANSI 150 - 2500
Temperature	-50°F to + 1000°F
Seat Materials	TFM, RPTFE, UHMPWE, PEEK, Carbon PEEK, Metal Seated, Carbon TFM 4215



# DM2600 SERIES

Top Entry Ball Valve, ANSI 150, ISO 5211 Direct Mounting Pad  
 Silicone-free, anti-static, face-to-face interchangeability  
 Locking handle  
 MTRs available

Size	2" - 4"
Body Material	WCB, 316, 316L, 317, Alloys
Trim Material	WCB, 316, 316L, 317, Alloys
Packing Material	PTFE, Graphoil, TFM
Port	Reduced port
End Connections	ANSI 150
Temperature	-20°F to +600°F
Seat Materials	Super Teflon, Carbon TFM, TFM 4215
Options	Chainwheel, Fusible link, Extended bonnet



## DM2500 SERIES

ANSI 150 & 300, ISO 5211 Direct Mount Flanged Ball Valve  
 Fire safe to API 607, 7th Edition  
 Blow-out proof stem, silicone-free, anti-static, live-loaded packing  
 MTRs available  
 CRN available, UL certified, NACE MR0175

Size	1/2" - 12"
Body Material	WCB, 316, LCB, Alloys
Trim Material	304, 316, Alloys
Packing Material	PTFE, Graphoil, TFM
Port	Full port and reduced port
End Connections	ANSI 150 & 300, DIN flanges
Temperature	-50°F to +1000°F
Seat Materials	TFM, Carbon TFM, PEEK, Metal Seated
Options	Cryogenic and fugitive emission bonnets, Locking handle, Gear operator



## DMOB2500 SERIES

ANSI 150 Flanged V-Ball Control Valve  
 Fire-safe to API 607, 7th Edition  
 ISO 5211 direct mounting pad, live-loaded packing, self-adjusting packing,  
 blow-out proof stem design  
 MTRs Available, UL Certification, NACE MR 0175

Size	1/2" - 12"
Body Material	WCB, 316, Alloys
Trim Material	316, 17-4
Packing Material	PTFE, Graphoil, TFM
Port Design	Full Port, Reduced Port
End Connections	Flanged 150, 300
Temperature	-50°F to +1000°F
Seat Materials	TFM, Carbon TFM, PEEK, Carbon PEEK, Metal Seated Plate, TFM 4215
Options	Chainwheel, 15°, 30°, 60°, 90°, slotted V-ball, Locking handle, Gear Operator
Certifications	UL certified for fluid types, certified to NSF/ANSI 372 and NSF/ANSI 61 Section 8-2017 by Truesdail Laboratories for drinking water

# 9600 SERIES

Floating ball Flanged Ball Valve  
Fire safe to API 607, 4th Edition  
API 6D certified, B16.34, B16.10, ISO 5211 mounting pad  
NACE certified  
MTRs available, CRN available

Size	1/2" - 10"
Body Material	WCB, 316, A105, 304, LF2, LCB
Trim Material	304, 316, Chrome
Packing Material	PTFE, Graphoil, TFM
Port	Full port and Reduced port
End Connections	ANSI 150 - 600, RF, 600 RTJ, SW, BW, DIN Flanges
Temperature	-50°F to + 650°F
Seat Materials	Teflon, RPTFE, TFM, TFM 4215
Options	Fusible link, Extended bonnet, Chainwheel, Locking handle, Gear operator



# THREE, FOUR & FIVE WAY VALVES

## DMCF3L/T2A33FTTKE SERIES

T-Port & L-Port, ISO 5211 Direct Mount Ball Valve  
Cavity-filled, positive shut-off, in-line repairable, live loaded packing  
Blow-out proof stem, 10 Ra interior finish, 800 WOG  
MTRs available, 3A certified

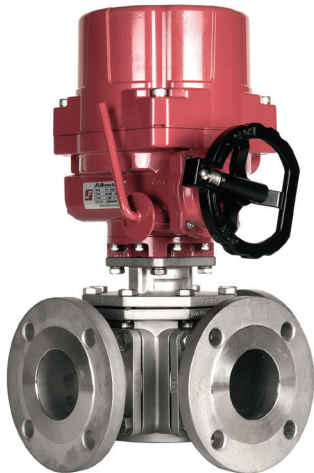
Size	1/2" - 4"
Body Material	316, Alloys, WCB
Trim Material	316, Alloys
Packing Material	PTFE, Graphoil, TFM
Port	Full port
End Connections	Tri-clamp, BW, Tube, Flanged
Temperature	-50°F to +650°F
Seat Materials	PTFE, TFM, TFM 4215
Options	Automation, Limit switch, Locking& spring handle



## DM4LL/T-2A33FTTF150 SERIES

X Port, Double L, 4-Way, 5-Way, ISO 5211 Direct Mounting Pad  
Self-adjusting packing, blow-out proof stem, 800 WOG  
Silicone-free, four seats, positive shutoff, live loaded packing  
MTRs available, CRN available

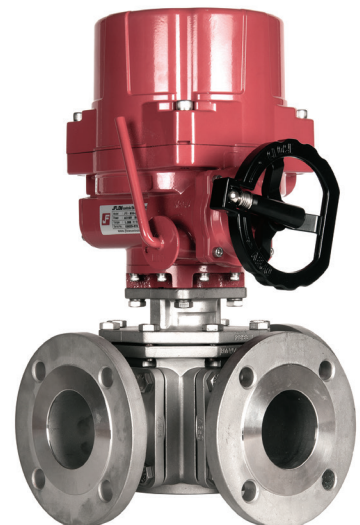
Size	1/2" - 16"
Body Material	WCB, 316, Alloys
Trim Material	316, 17-4 stem
Packing Material	PTFE, Graphoil, TFM
Port Design	Full port
End Connections	NPT, SW, BW, ANSI 150 & 300, DIN Flanges
Temperature	-20°F to +1000°F
Seat Materials	Super Teflon, Carbon, Carbon PEEK, Metal Seated, UHMPWE
Options	45° handle, Automation with accessories



## 3L/3T2A00 SERIES

Trunnion, 3 Way Ball Valve, T Port or L Port  
API 6D, ISO 5211 direct mounting pad, live loaded packing  
Blow-out proof stem, NACE certified, B16-34  
MTRs available, CRN available

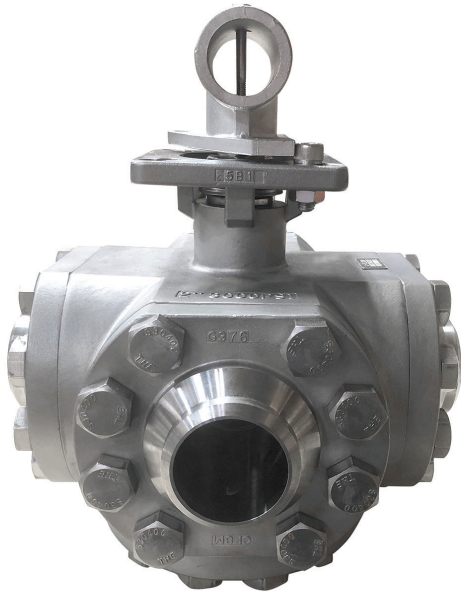
Size	2" - 16"
Body Material	WCB, 316, LCB, LF2, F316, A105, Alloys
Trim Material	316, 17-4 stem
Packing Material	PTFE, Graphoil, TFM
Port	Full port and Reduced port
End Connections	ANSI 150 - 900
Temperature	-50°F to +1000°F
Seat Materials	RPTFE, TFM, TFM 4215, Metal, PEEK
Options	Locking handle, Gear operator



# DM3L/3T600 SERIES

ISO 5211 Direct Mount Ball Valve, Positive shutoff, Full Port  
Silicone-free, 3 ports, live loaded packing  
May be used as a block or flow port  
Blow-out proof stem, Side entry

Size	1/4" - 3"
Body Material	Bronze
Trim Material	Chrome, 316, 304
Packing Material	PTFE or Graphoil
Port	Full port, Reduced port
End Connections	NPT, metric
Temperature	-20°F to +300°F
Seat Materials	PTFE
Options	45° handle, Automation with accessories, Limit switch, Locking handle



# DMHP3(4)L(T)2A00 SERIES

Side Entry, L/T/X, I Port, ISO 5211 Direct Mounting Pad, Trunnion Ball Valve  
Four seat design, positive shutoff, silicone-free  
Live-loaded packing, 3000 psi  
ANSI, 900/1500  
MTRs available

Size	1/4" - 2"
Body Material	WCB, 316, Alloys
Trim Material	316, Alloys
Packing Material	PTFE, Graphoil, TFM
Port	Full port
End Connections	NPT, Metric, BW, SW, ANSI Flanged 900, 1500
Temperature	-20°F to + 750°F
Seat Materials	PEEK, Carbon PEEK, Devlon
Options	45° handle, Automation with accessories



## 6800 SERIES

### Spring Loaded Check Valve

High capacity, soft seated for bubble-tight shutoff

Spring loaded for fast sealing action, low cracking pressure

MTRs available

Size	1/4" - 3"
Body Material	Stainless Steel
Trim Material	Stainless Steel
Packing Material	PTFE or Graphoil
Port	Full port
End Connections	NPT
Temperature	+10°F to +450°F
Seat Materials	PTFE, TFM1600, TFM4215



## DBDM4600/DBDM4800 SERIES

2000 & 3000 psi, Three Piece, Double Block & Bleed Ball Valve

Blow-out proof stem, ISO 5211 direct mounting pad

Fire safe to API 607, 7th Edition, high performance valve

MTRs available, UL Certification, NACE MR0175, LDAR Compliant

ISO-15848, TA-LUFT Emission Certification

Size	1/4" - 3"
Body Material	WCB, 316, Alloys
Trim Material	316, 17-4 stem, Alloys
Packing Material	PTFE, Graphoil, TFM
Port	Full port
End Connections	NPT, Metric, SW, Flanged, ANSI 150 - 900
Temperature	-50°F to +1000°F
Seat Materials	TFM 4215, PEEK, Carbon PEEK, TFM1600, Metal
Options	Locking handle, Stem extension, Limit switch

## DBDM2500 SERIES

Two Piece Flanged Ball Valve, Fire Safe API 607, 5th Edition

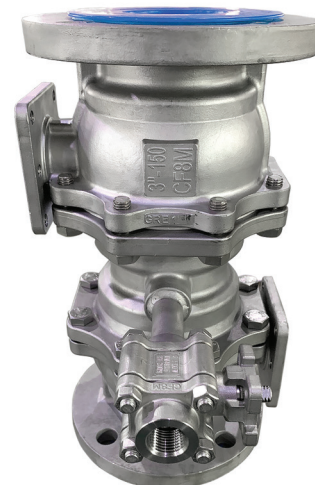
ISO 5211 direct mount, three piece, full port, live-loaded packing

Encapsulated seat with locking handle

MTRs available. UL Certification, NACE MR0175, LDAR Compliant

ISO-15848, LDAR Certification

Size	1/2" - 6"
Body Material	WCB, 316, Alloy 20, Hastelloy C, Super Duplex, Monel
Trim Material	316, Duplex, Alloy 20, Hastelloy C, Monel
Port Design	Full port
End Connections	ANSI 150#, Flanged 300#
Temperature	-100°F to +650°F
Seat Materials	Metal seated, PEEK, Super Teflon, Carbon Super Teflon, Carbon PEEK
Options	Locking handle, Stem extension, Limit switch





## KE/KS SERIES

Through Conduit, Slab Gate Valves  
 API 6FA fire safe design, double block & bleed  
 Self-relieving seat, top entry bonnet  
 Complies with API 6D / API 6D SS  
 MTRs available, CRN available

Size	2" - 60"
Body Material	WCB, 316SS, Alloy materials
Trim Material	Chrome, 316SS, Stellite
Packing Material	PTFE or Graphoil
Port	Full port, Reduced port
End Connections	ANSI 150 - 1500
Temperature	-100°F to +1000°F
Seat Materials	RPTFE, Metal



## DB5400 SERIES

Double Block & Bleed Plug Valve  
 Rising stem  
 Soft or metal seated options, hand or power operation  
 Bi-directional sealing with zero leakage, little maintenance

Size	2" - 24"
Body Material	WCB, WCC, Stainless Steel, Alloy materials
Trim Material	WCB, 17-4
Packing Material	PTFE or Graphoil
Port Design	Full port
End Connections	ANSI 150 - 2500
Temperature	-20°F to +800°F
Seat Materials	Soft or metal
Options	Handwheel extension, limit switch, thermal packing, and custom painting



4665 Interstate Drive  
Cincinnati, OH 45246  
513.731.2900  
sales@jflowcontrols.com  
[www.jflowcontrols.com](http://www.jflowcontrols.com)